



A division of
All Blades Canada Inc.

CHITTOM EQUIPMENT

4960 13 Street SE

Calgary, AB T2G 5M9

Phone: (403) 287-0999

Email: chittom@allblades.ca



WHO IS CHITTOM EQUIPMENT?

Chittom Equipment, a division of All Blades Canada Inc., has been manufacturing products for air cooled heat exchangers in Calgary since 1967.

We manufacture aluminum louvers, bug screens, hail guards, belt guards and custom frames for air flow control and fin tube protection.

Our products are built to the latest API specifications and are designed to be used in some of the harshest climates in the world.

We have the capability and experience to ship our products worldwide. We have shipped to India, Malaysia, China, Korea, Russia, the USA and other countries around the world.

For further information, feel free to email chittom@allblades.ca.

LOUVERS

Chittom Equipment industrial louvers are used in refinery, chemical processing, and gas compression applications or wherever the temperature of liquids and air must be controlled. The louvers ensure optimum operation of heat exchangers and engines, increasing efficiency, reducing operating costs, and prolonging the life of equipment.

We offer an all-aluminum, corrosion free louver that provides greater rigidity without excessive weight.

Our TFE bushings used at all pivot points never require lubrication or maintenance. Blade movement is positive and without flutter under varying air loads. Linkages use clamp type connection to the 2" torque tube. Our louvers use a bolted connection between the blade horn and actuator rod for easy replacement and adjustment.

Our louvers can be operated automatically with a variety of actuators or manually controlled.

We design and build the operators to our customer's individual request.

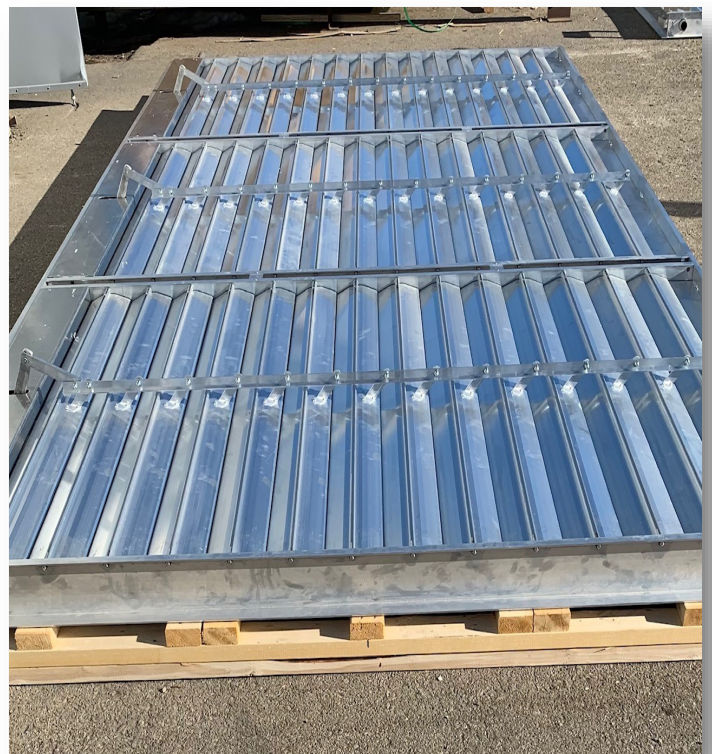
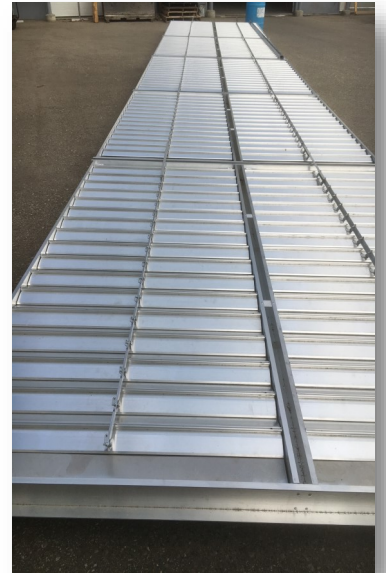
Upon request our louvers can be equipped with built in or removable bug / lint screens or hail guards.

TOP LOUVERS

Top Louvers built to API 661 edition 7 specifications

4" or 4 3/4" deep x 0.170" thick channel

6 1/4" wide x 0.090" thick blades



SIDE LOUVER WITH BUG SCREEN

Louvers built to API 661 edition 7 specifications

4" or 4 3/4" deep x 0.170" thick channel

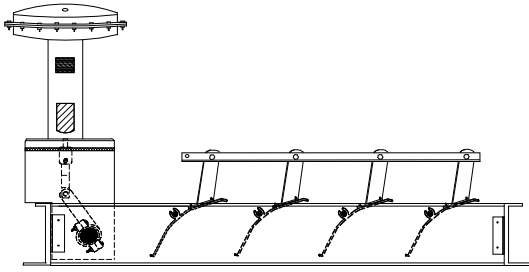
6 1/4" wide x 0.090" thick blades

Removable bug screen frame

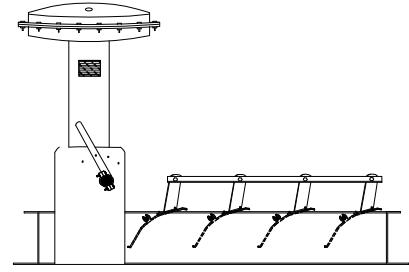
5 1/2" deep x 0.079" thick channel



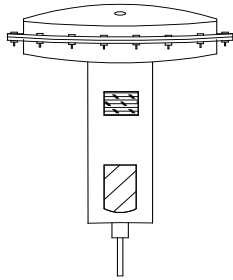
CUSTOM AUTOMATIC OPTIONS



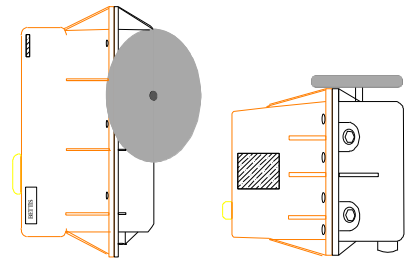
Louver with internal tube and pneumatic actuator



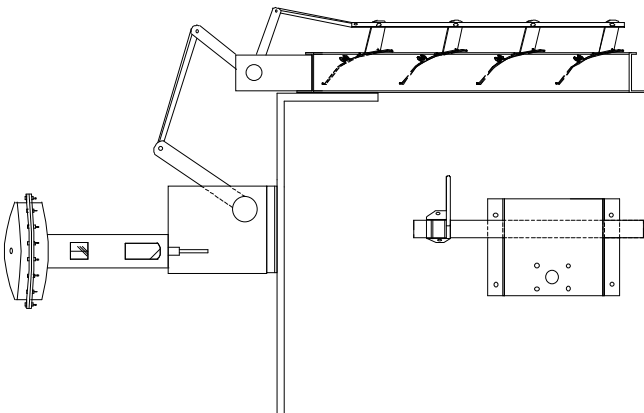
Louver with external tube pneumatic actuator and manual override



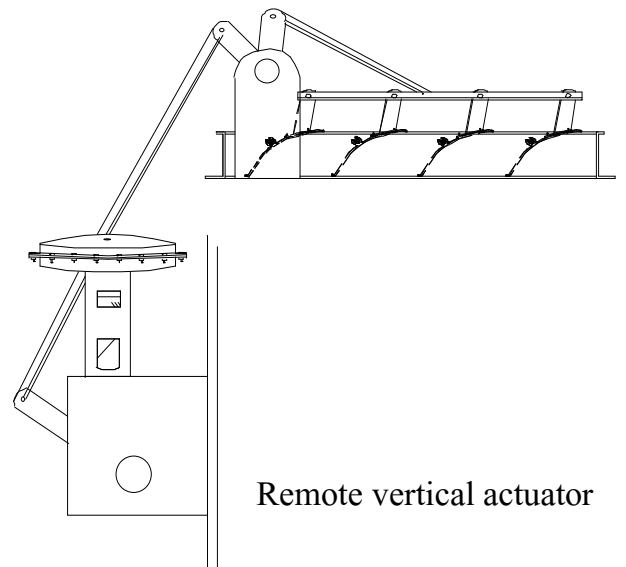
Pneumatic actuator



Electric actuator

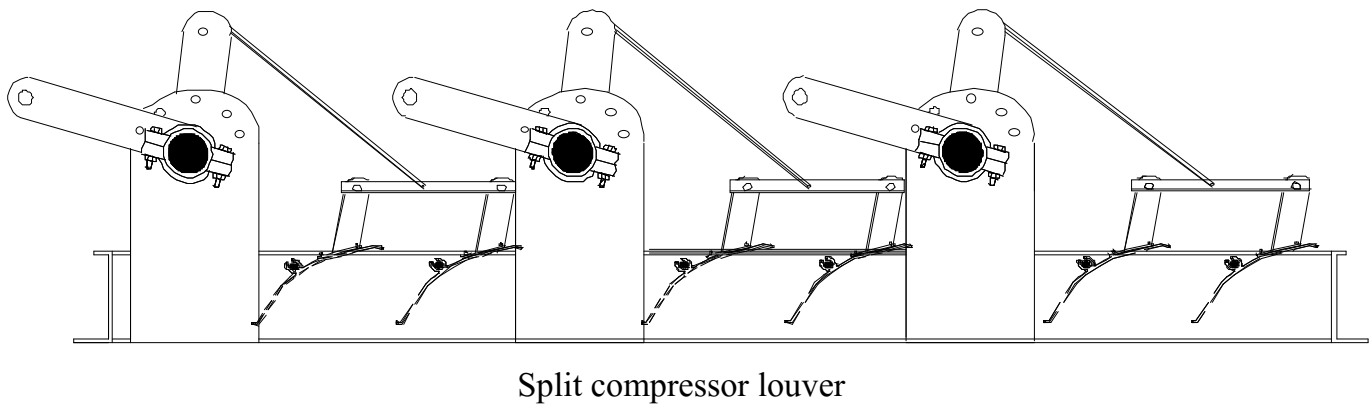
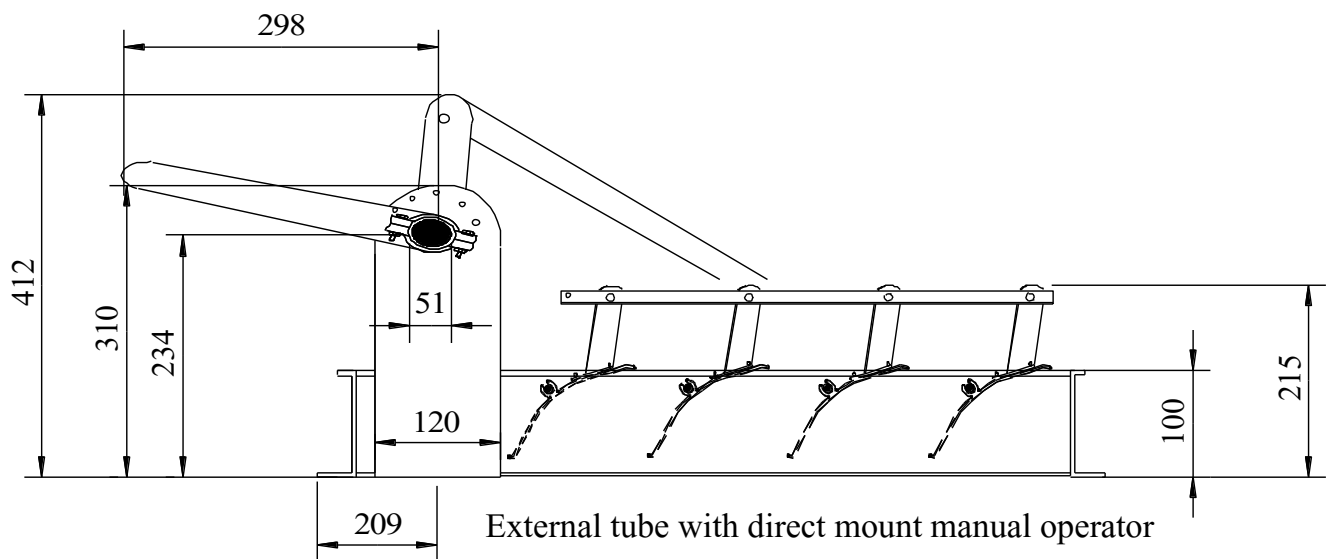
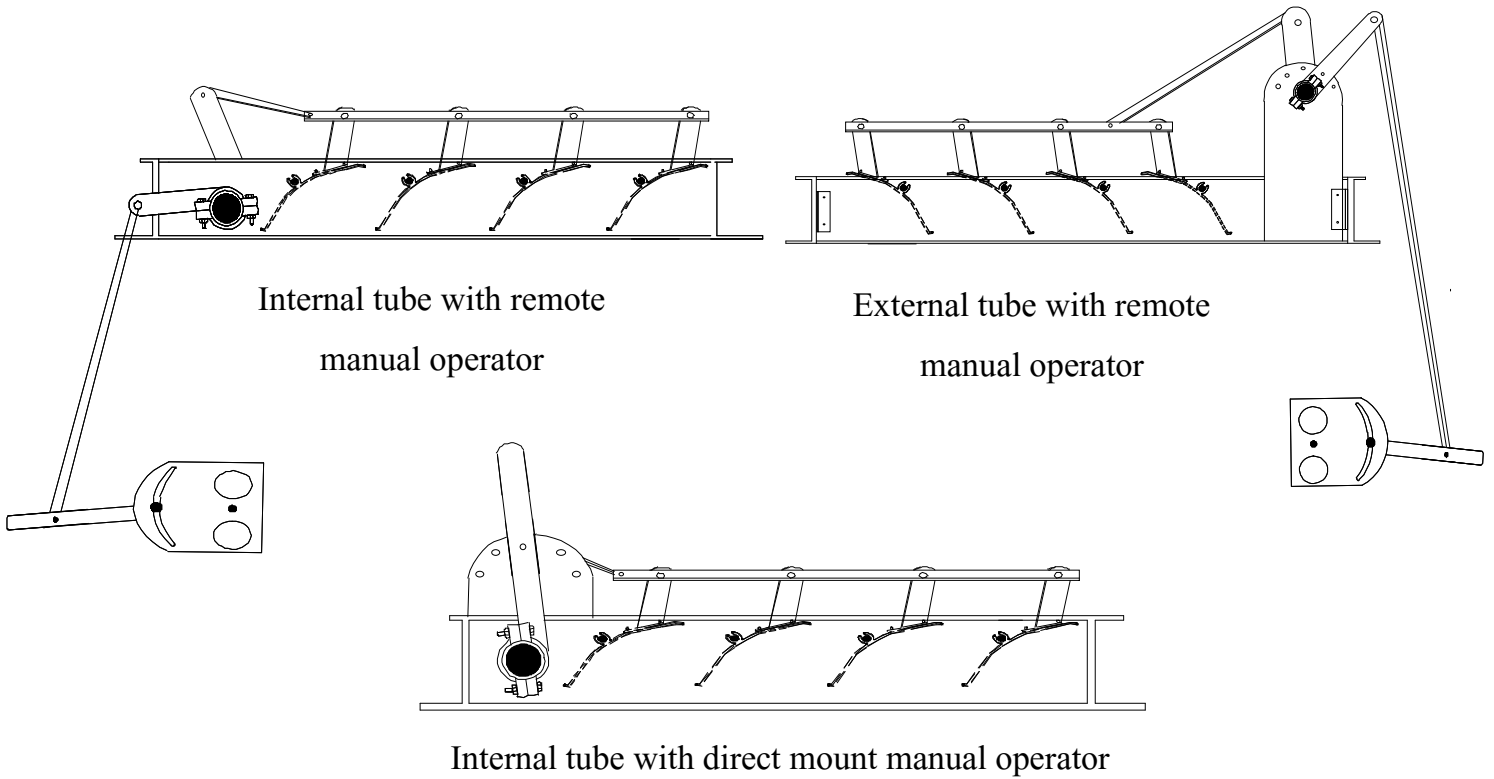


Remote horizontal actuator



Remote vertical actuator

CUSTOM MANUAL OPTIONS



MAN DOORS



Sliding Panel Door

Extruded frame

2" x 2" x 0.125" door with 0.080 panel

Standard Panel Door With Frame

4" extruded frame

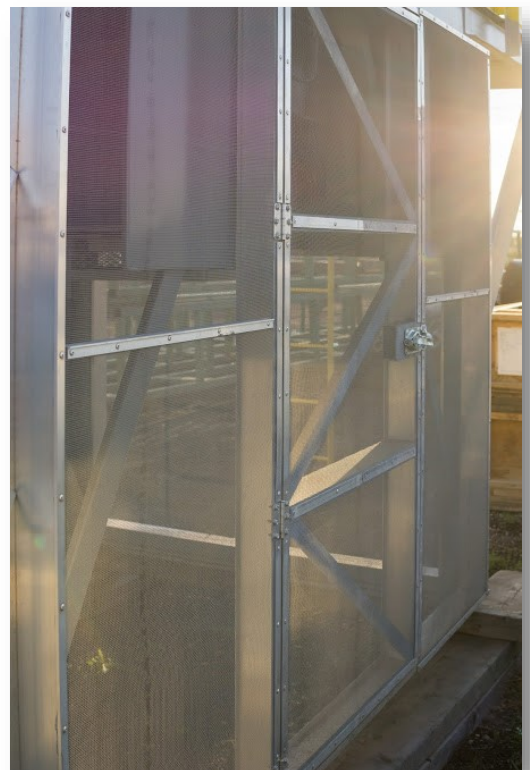
2" x 2" x 0.125" angle door 0.080" panel



Screen Door

4" channel frame

0.017"-8 mesh bug screen



DOUBLE WIDE TRUCK DOORS

Sliding Panel Door

4 3/4" 6063-T5 extruded channel frame

2" x 2" x 3/16" door with 0.080 panel



Hinged Double Wide Truck Door

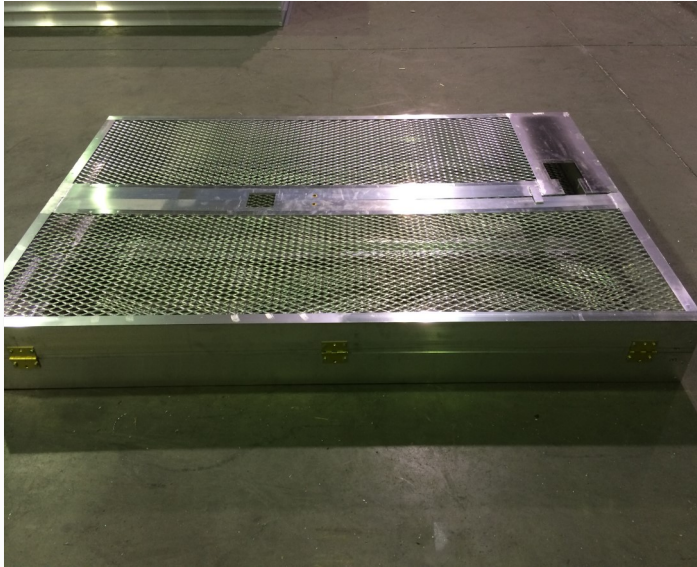
4" 6063-T5 extruded channel frame

4" channel door

With premium galvanized 0.017"-8 mesh screen

CUSTOM DESIGN BELT GUARDS

- 8" - 11" deep 6063-T5 extrusion channel
- 0.750-0.125" flat expanded aluminum
- optional hinges for easy maintenance



TWISTED TAPE TURBULATORS

Material and twists to meet your specific needs.



SCREEN OPTIONS

Chittom Equipment custom manufactures bug screens and hail guards to be mounted on louvers or by themselves.

Our frames are lightweight but rigid enough to withstand the pressure from the ache fans.

We have a variety of mesh available to use depending on our customers' requirements:

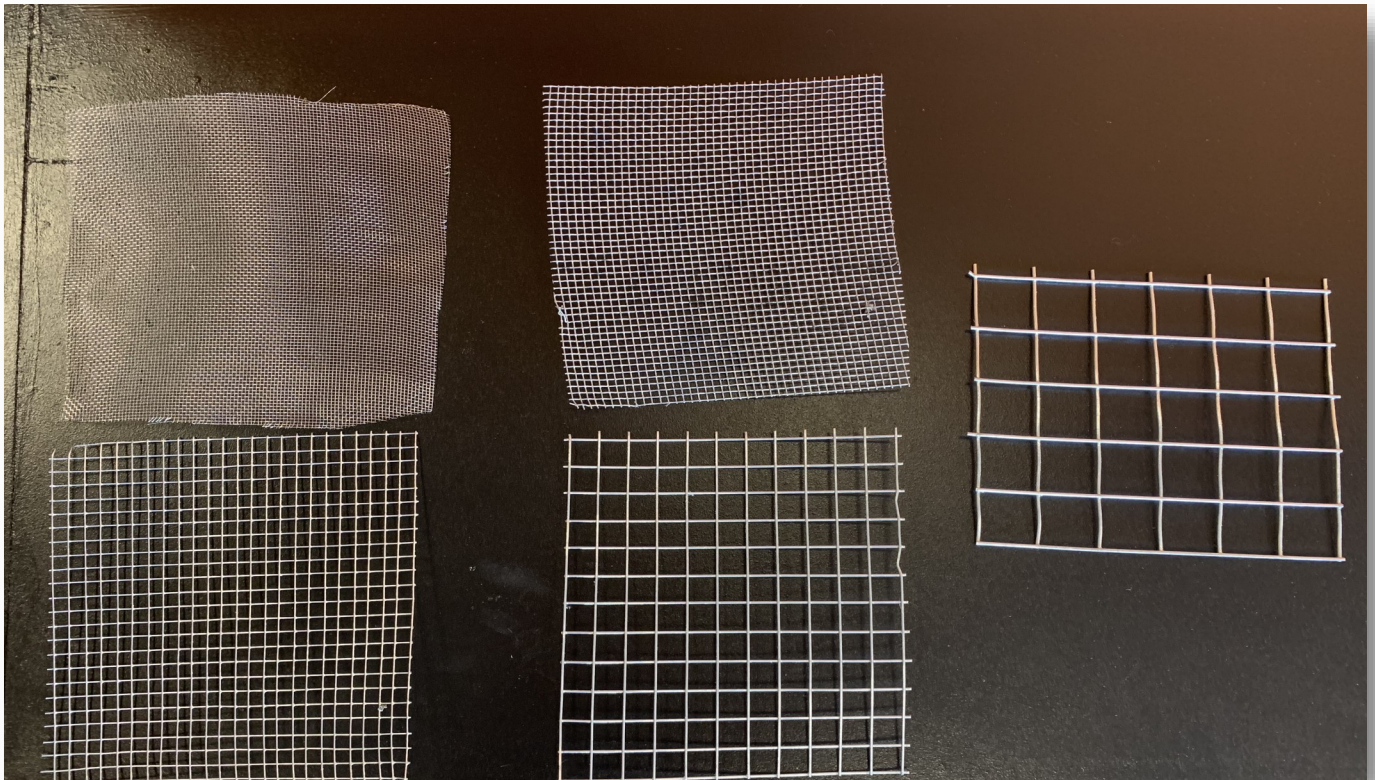
Top left-woven S.S 16 mesh 0.011" wire diameter 68% open area

Top middle-welded galvanized 8 mesh 0.017" wire diameter 75% open area

Bottom left-welded galvanized 4 mesh 0.025" wire diameter 81% open area

Bottom middle-welded galvanized 2 mesh 0.041" wire diameter 92% open area

Far right-welded galvanized 1 mesh 0.063" wire diameter 94% open area



The mesh can be permanently fixed to the frame or built in smaller removable panels. We can also manufacture bug screens with 50% bird mesh and sliding 8 mesh for winter use.

PALLET STYLE CRATING

- Crates built for easy and safe loading and unloading
- Overseas plywood crates also available

